

• *A NEW KIND OF CAST  
TOTALLY USING A  
TOTALLY DIFFERENT  
METHOD*

• *BREATHABLE*

• *IT IS MADE WITH THE  
BEST EXISTING MEDICAL  
TECHNOLOGY*



CE

# *TUBICAST*®

*THE BIRTH OF THE NEW PROGRESSIVE CAST*

*) (A.M.E.*

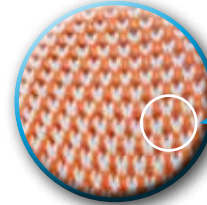
[www.tubicast.com](http://www.tubicast.com)



www.tub

## **TUBICAST IS THE FIRST “MESH” CAST TO BE DEVELOPED IN THE WORLD**

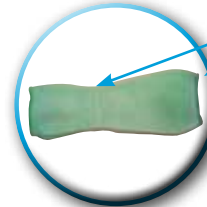
- IT ALLOWS **CIRCULATION OF AIR AND WATER** AND WEARER MAY SHOWER OR TAKE A BATH
- IT IS VERY **FLEXIBLE** AND HAS A **DIFFERENTIATED ELASTICITY** TO PERFECTLY ADAPT TO THE ANATOMY OF THE LIMB TO BE IMMOBILISED THUS AVOIDING UNWANTED COMPRESSION AND REDUCING THE RISK OF:
  - PHLEBOSTASIS
  - PRESSURE STASIS
  - CIRCULATORY FAILURE
  - BEDSORE
- IT IS **REINFORCED** AT THE END OF THE LOWER LIMB TO BETTER WITHSTAND THE PATIENT'S WEIGHT
- IT HAS AN EXCELLENT LEVEL OF **RADIO-TRANSPARENCY**
- IT IS EXTREMELY LIGHTWEIGHT
- IT IS EASY TO FIT AND REQUIRES **VERY LITTLE TIME**
- IT IS EASY TO DISPOSE OF SINCE IT CONTAINS **NO GLASS FIBRE**



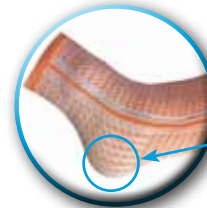
VENTILATION HOLES



REGULAR BLOOD FLOW



DIFFERENTIATED ELASTICITY



REINFORCEMENT



### **PARTIAL MEDICATION OF WOUNDS AND SKIN COMPLAINTS**



During immobilisation, wounds and swelling can be treated locally simply by cutting Tubicast.

- 1 Mark the area concerned.
- 2 Cut the area marked on three sides.
- 3 Cut the under-cast padding.
- 4 Open the cut flap, medicate and cover with a bandage.
- 5 Close the flap once again.
- 6 Use adhesive tape to keep it closed.



## **COMPOSITION**

*Tubicast is a combi-set made of an internal water-resistant polyolefin tubular mesh padding*

*and an outer polyester mesh sleeve soaked in polyurethane resin*

*Disposable product. Keep in a dry place at 24°C.*

*Latex free / Phthalate free*

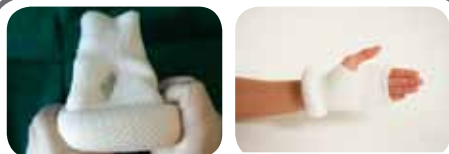


## **INDICATIONS**

*Tubicast can be used to set upper or lower limb fractures.*

*Tubicast hardens in 2-3 minutes.*

### **APPLICATION METHOD SHORT ARM**



**1) Insert the patient's thumb into the hole in the under-cast padding sleeve and unroll it without pulling until it covers the part to be immobilised.**



**2) Put on gloves and dip Tubicast into water at room temperature (3-4 seconds), opening it as far as possible and draining excess water without wringing it**



**3) Put the Tubicast into position keeping the cut edge aligned with the patient's thumb. Cover the hand by folding the Tubicast and gently pressing**



**4) Fold the under-cast padding over the Tubicast.**



**5) Unroll and then fold the under-cast padding over the upper edge of the Tubicast gently pressing**



**6) Dip your hands in water and use them to smooth the cast**



# TUBICAST<sup>®</sup>

## APPLICATION METHOD SHORT LEG



**1) Place the under-cast padding sleeve on the patient and unroll it along the limb to be immobilised without pulling. Position the guide line on the top of the foot taking care not to create creases.**



**2) Put on gloves and dip Tubicast into water at room temperature (3-4 seconds), opening it as far as possible and draining excess water without wringing it**



**3) Put the Tubicast onto the limb starting from the lower part of the toes and positioning it about 2-3 cm above the under-cast padding. Fold the padding over and gently press.**



**4) Unroll Tubicast**



**5) Fold the under-cast padding over the top gently pressing**



**6) Dip your hands in water and use them to smooth the cast**

CODE	SIZE	DESCRIPTION	PACK
T325 SA	3" x 25 cm.	SHORT ARM	20PZ
T335 SL	3" x 35 cm.	SHORT LEG	20PZ
T340 LA	3" x 40 cm.	LONG ARM	20PZ
T345 XSL	3" x 45 cm.	SHORT LEG EXTRA	20PZ
T355 LL	3" x 55 cm.	LONG LEG	20PZ
T435 SA	4" x 35 cm.	SHORT ARM	20PZ
T450 SL	4" x 50 cm.	SHORT LEG	20PZ
T455 LA	4" x 55 cm.	LONG ARM	20PZ
T475 LL	4" x 75 cm.	LONG LEG	20PZ
T555 SL	5" x 55 cm.	SHORT LEG	20PZ
T590 LL	5" x 90 cm.	LONG LEG	20PZ